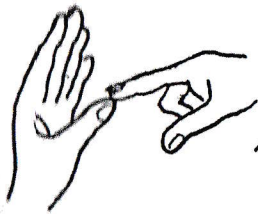
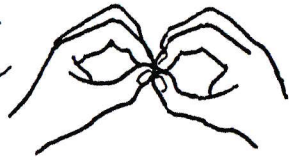


FINGER SPELLING

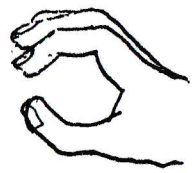
A manual alphabet which can help the very deaf.



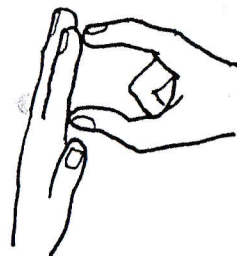
A touch tip of thumb



B called 'specs' by some



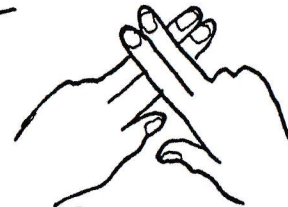
C just mime the C



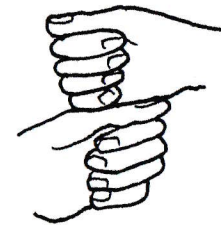
D the same for D



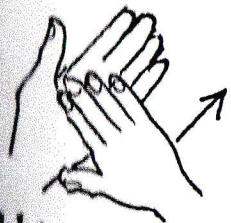
E first finger's boss



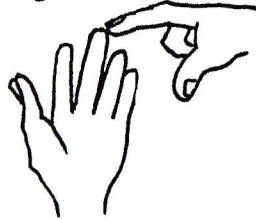
F big double cross



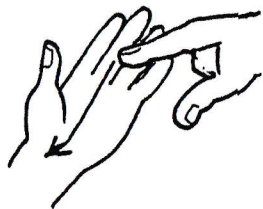
G clenched fists in stand



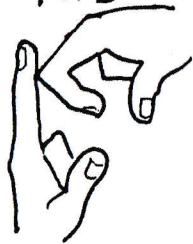
H hand moves over hand



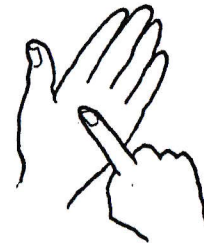
I middle finger tip



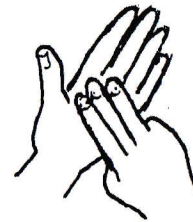
J a down hand trip.



K a kind of mime



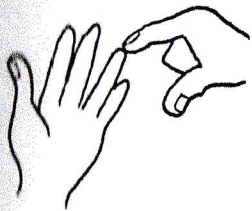
L one on hand this time



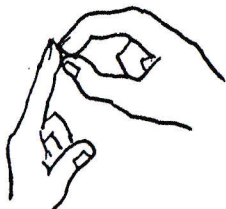
M fingers three on hand



N two on palm now land



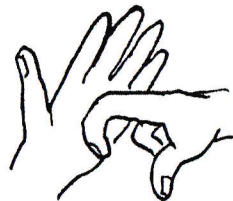
O ring finger is touched



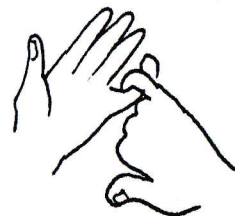
P is kind of clutched



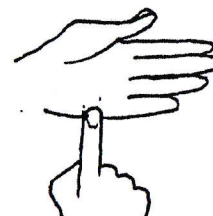
Q a mime is meant



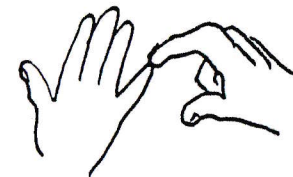
R palm with finger bent



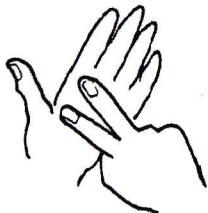
S small fingers intertwine



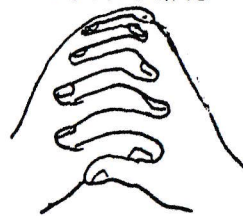
T touch the hand edge line



U touch little finger, see



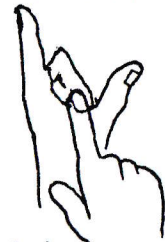
V two on hand make V



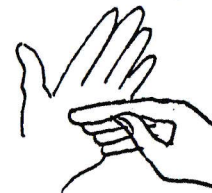
W interlocking hands



X first on first one lands



Y finger in the joint



Z on hand the fingers point